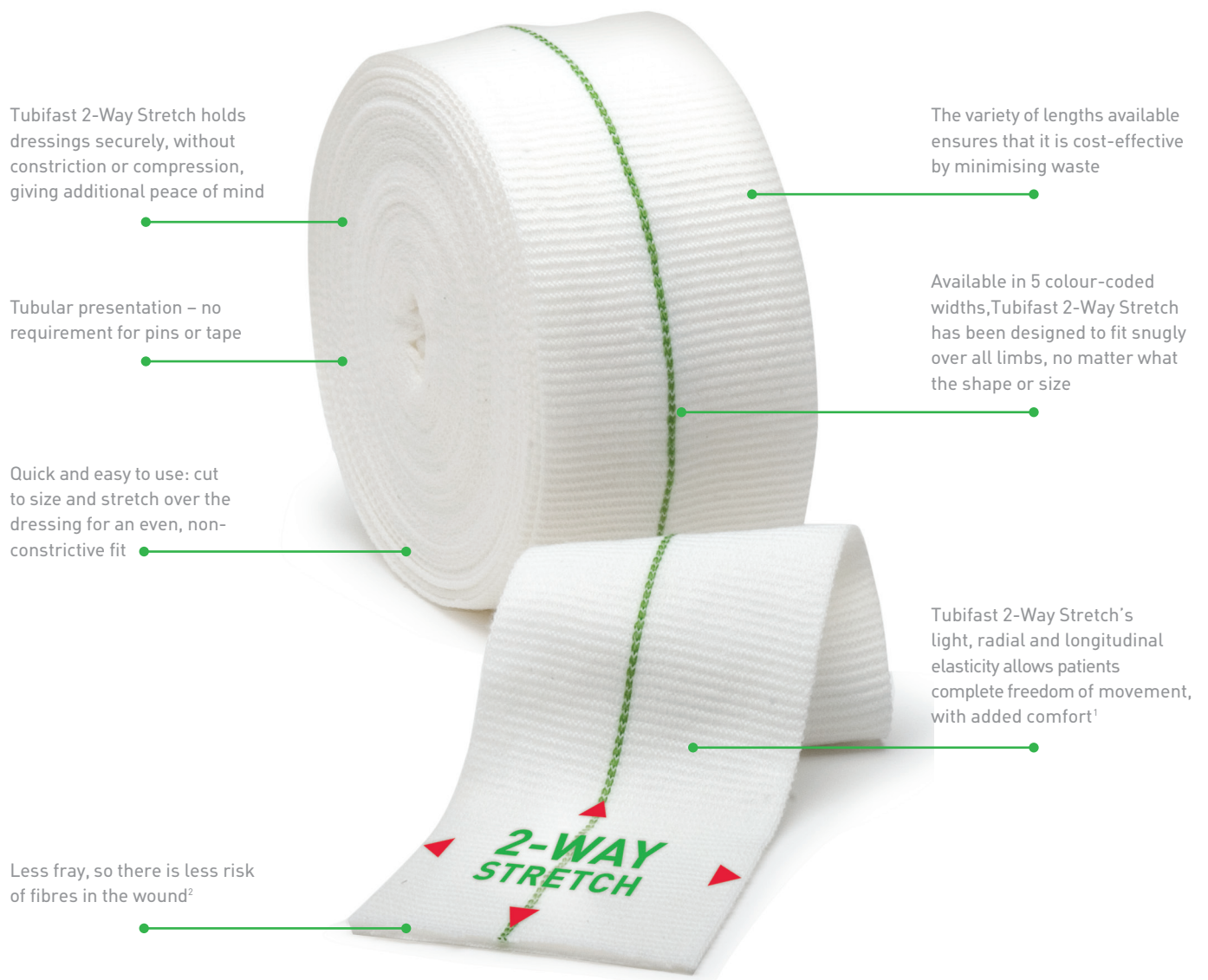


# Tubifast<sup>®</sup> WITH 2-WAY STRETCH<sup>™</sup> TECHNOLOGY

## Lightweight, tubular dressing retention

New Tubifast 2-Way Stretch is the world's first and only lightweight elasticated tubular bandage with radial and longitudinal stretch.<sup>1</sup> This unique mode of action allows patients complete freedom of movement, with added comfort. Ideal for dressing retention and skin covering for any part of the body. It can also be used for patch wrapping and as an under-cast stockinette. Tubifast 2-Way Stretch holds dressings securely in place without the need for tapes, pins or ties. It is quick and easy to use, with less risk of fraying<sup>2</sup> than traditional tubular bandages.



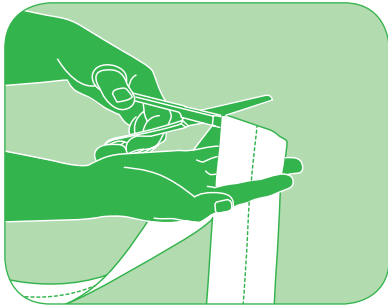
## How Tubifast 2-Way Stretch works

New Tubifast 2-Way Stretch is manufactured from viscose with very fine elastane threads knitted into the fabric radially and longitudinally, to provide light elasticity.

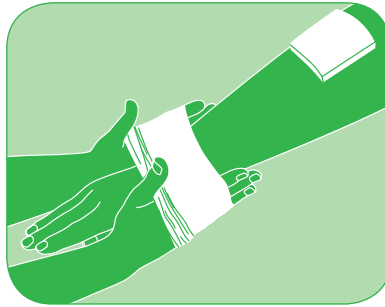
Tubifast 2-Way Stretch holds dressings securely, without constriction or compression. No pins or tapes are necessary. Its two-way stretch allows patients complete freedom of movement and added comfort.

Tubifast 2-Way Stretch is available in a range of five widths, and has been designed to fit snugly over all limbs, no matter what the shape or size.

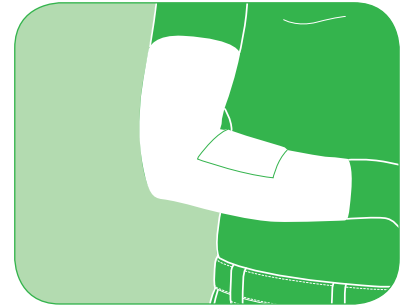
## How to use Tubifast 2-Way Stretch



1. Choose the correct width bandage, using the quick reference colour coding, and cut to length.



2. Stretch Tubifast 2-Way Stretch over the affected area.



3. Position Tubifast 2-Way Stretch to cover the dressing. Illustrated, step-by-step instructions are available for more advanced applications.

## Benefits of Tubifast 2-Way Stretch

- Tubifast 2-Way Stretch holds dressings securely, without constriction or compression
- Its radial and longitudinal stretch allows patients complete freedom of movement, with added comfort<sup>1</sup>
- A variety of lengths are available, ensuring cost-effectiveness by minimising waste
- Quick and easy to use: simply cut to size and stretch over the dressing for an even, non-constrictive fit
- Available in a range of quick reference, colour-coded sizes, to fit everything from small limbs to adult trunks
- It has less fray so there is less risk of fibres in the wound<sup>2</sup>

## Fibre content

Viscose, Elastane and Polyamide

## Washing instructions



Natural rubber latex is not a constituent of Tubifast 2-Way Stretch or its packaging

Each size is identified by a coloured line knitted into the bandage. It's quick and easy to use: cut to size and stretch over the dressing for an even, non-constrictive fit.

## Areas of use

Tubifast 2-Way Stretch can be used as a dressing retention and skin covering for any part of the body. It can also be used for patch wrapping and as an under-cast stockinette.

Because of its tubular construction, Tubifast 2-Way Stretch is particularly suitable for holding dressings in place on difficult areas such as stumps of amputee patients.

## Tubifast 2-Way Stretch Ordering information

Product	Width x length	Limb	Art. No.
<b>RED LINE small limbs</b>	3.5 cm x 10 m	8-15 cm	2434
<b>GREEN LINE small and medium limbs</b>	5 cm x 10 m	10-25 cm	2436
<b>BLUE LINE large limbs</b>	7.5 cm x 10 m	20-45 cm	2438
<b>YELLOW LINE extra large limbs, heads, children's trunks</b>	10.75 cm x 10 m	35-65 cm	2440
<b>PURPLE LINE adult trunks</b>	20 cm x 10 m	60-130 cm	2444



<sup>1</sup> Published data shows that Tubifast 2-Way Stretch exceeds the minimum requirement of longitudinal stretch for the actions of sitting, bending and flexing. Physical testing of textiles, B. P. Saville, Woodhead Publishing, 1999.

<sup>2</sup> Data on file.

Mölnlycke Health Care, Suite 1.01, 10 Tilley Lane, Frenchs Forest  
NSW 2086, Tel. 1800 005 231. [www.molnlycke.com.au](http://www.molnlycke.com.au)  
New Zealand Orders & Enquiries 0800 005 231, [www.molnlycke.co.nz](http://www.molnlycke.co.nz)

The Mölnlycke Health Care name and logo and Tubifast and 2-Way Stretch are registered globally to one or more of the Mölnlycke Health Care Group of Companies. Global Patent Pending.