

Stays on

Uniquely conforms



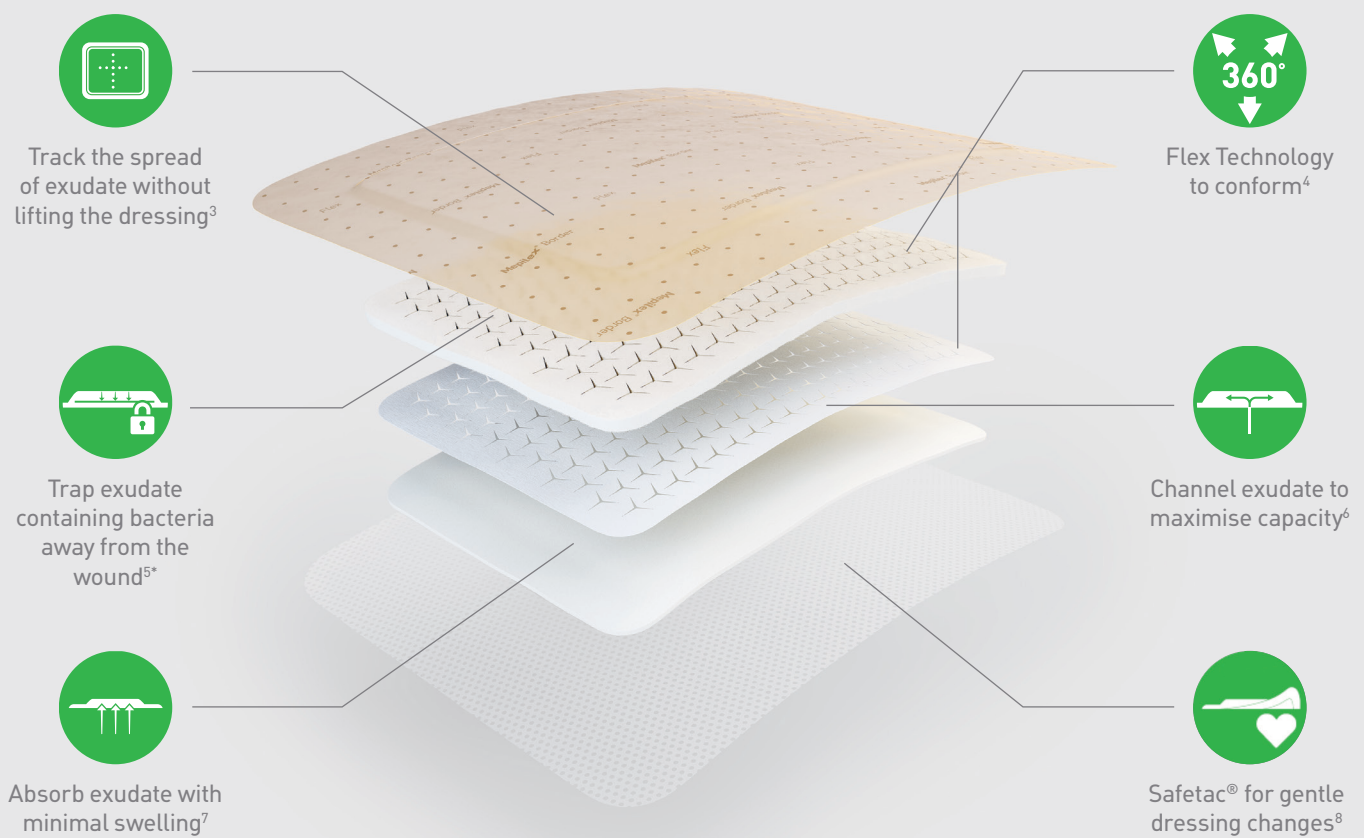
Mepilex® Border Flex
Mepilex® Border Flex Oval
Mepilex® Border Flex Lite


Mölnlycke®

Wounds need to heal. Patients need care. Nurses need time. Budgets are tight. The challenge is finding a dressing that is comfortable and stays on as long as it is needed.

Introducing the Mepilex® Border Flex range

Our next generation of flexible dressings is designed to stay on and uniquely conform aiming to give time back to nurses, cost savings back to managers and quality of life back to patients^{1,2}.

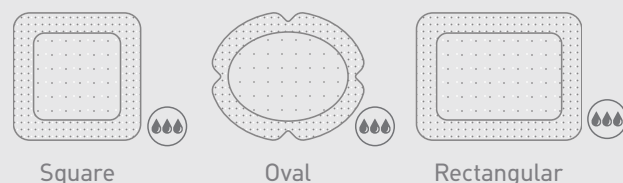


*Not available in Mepilex Border Flex Lite

Choose the right dressing for your patient's needs

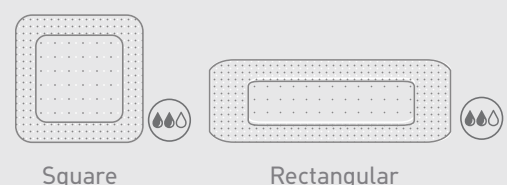
Mepilex® Border Flex / Oval

Designed for a wide range of exuding wounds, including leg and foot ulcers, traumatic wounds (e.g. skin tears) and surgical wounds, as well as part of a prophylactic therapy to help prevent skin damage, e.g. pressure injuries.



Mepilex® Border Flex Lite

Mepilex Border Flex Lite, a 4-layer dressing with Flex Technology for non- to moderately exuding wounds. It is also available in smaller sizes.



Up to 1/3 of patients complain that their dressing needs changing daily⁹.

Smart exudate management

Giving you confidence to leave the dressing on for longer and still maintain an optimal wound healing environment.

MEPILEX BORDER FLEX HAS AS MUCH AS

2.2x

greater exudate handling compared to other bordered foam dressings tested¹²



1. Rapid absorption with minimal swelling:

The foam layer allows rapid absorption of both normal and viscous exudate^{10,11} and it is better at handling exudate than other bordered foam dressings¹².



2. Maximises capacity by channelling exudate:

Exudate is channelled away from the wound and over a wider area to increase moisture vapour loss and reduce swelling^{6,7}.



3. Traps bacteria away from the wound:

The superabsorbent fibres in the retention layer prevent exudate containing bacteria from re-entering the wound bed, even under compression^{5*}. The backing film prevents entry of external bacteria^{13**}.



4. Tracks exudate without dressing removal:

The Exudate Progress Monitor allows the spread of exudate to be objectively assessed and recorded, without disturbing the wound³.

*Not available in Mepilex Border Flex Lite

**particles/ microbes larger than 25 micrometres

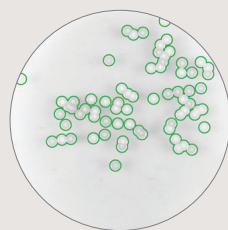
Fighting recontamination

Bacteria trapping in action: Mepilex[®] Border Flex **releases up to 22 times less bacteria** than other dressings¹⁴



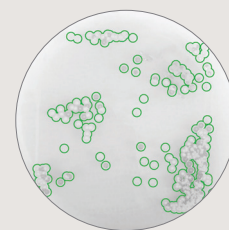
A

Mepilex Border Flex after 1 hour of contact, number of bacterial colonies: between zero and the low single digits ^{*15,16}.



B

Sorbact[®] Foam Gentle Border after 1 hour of contact, number of bacterial colonies: about 70 bacterial colonies ^{*15}.



C

Cutimed[®] Siltec[®] Sorbact[®] after one hour of contact, number of bacterial colonies: too numerous to count ^{*16}.

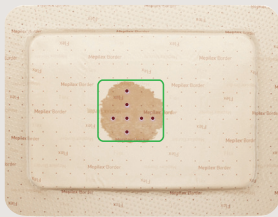
*In vitro studies comparing the ability to trap bacteria in the dressing when exposed to pressure. The pictures show bacteria on agar plates. The in vitro tests do not compare the bacterial binding effect between Sorbact[®] and Mepilex[®] Border Flex. Other functions relating to managing bacteria have not been subject to the comparison. These are in vitro tests, the clinical relevance has not been investigated.

How the Exudate Progress Monitor works

Leaving wounds undisturbed can help healing. The Exudate Progress Monitor gives you the confidence to leave the dressing in place for longer³.

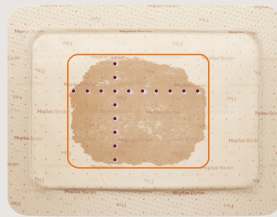


The Exudate Progress Monitor is a grid dots that are 1cm apart and can be used to track and record exudate.



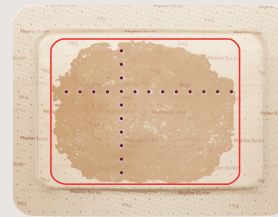
e.g. 4x4 cm

As exudate spreads you can record a dot count that reflects exudate volume in the dressing.



e.g. 8x10 cm

You can then refer to the recorded dot count to help monitor exudate trends.



e.g. 10x13 cm

Consider a dressing change when exudate has reached **3 edges** of the dressing.*

***Wound inspections and dressing change frequencies are driven by a clinical decision and should be at the discretion of the treating clinician.**

Note: All images are stylised for ease of visualisation. Exudate Progress Monitor dots do not change appearance with/without exudate.

9/10 patients feel their wound impacts their quality of life⁹.

Reduced pain and damage to the skin

All Mepilex[®] Border Flex dressings seek to reduce trauma caused by dressing changes. This is made possible by our proven Safetac[®] soft silicone wound contact layer, **which minimises pain and damage to the skin and the risk of maceration** compared with traditional (adhesive) dressings^{8,17,18}.

MORE THAN

9/10

patients preferred dressings with Safetac over other dressings with traditional adhesives⁸



More than half (58%) of patients complain that their dressing pulls or doesn't move with their body⁹.

Designed to stay on and uniquely conform

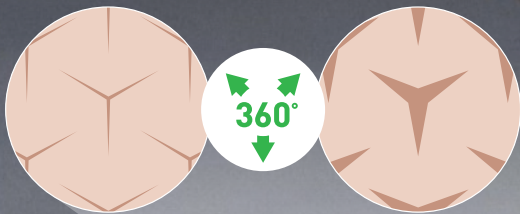
Thanks to Flex Technology, the unique conformability of Mepilex[®] Border Flex allows it to adapt to the shape and movement of the patient⁴. Reducing pressure on the skin and pull on the borders increases comfort and minimises the risk of detachment¹⁹.

And it is water-resistant, so your patients can shower²⁰.



Unique Flex Technology = 360° flexibility

Y-cuts expand to allow movement:



Mepilex Border Flex is

UP TO 11x

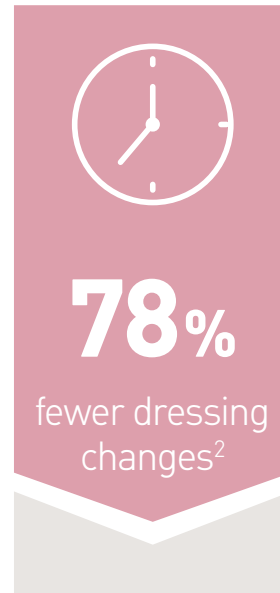
more flexible than other bordered foam dressings tested⁴.



Mepilex® Border Flex can make a positive impact on your budget

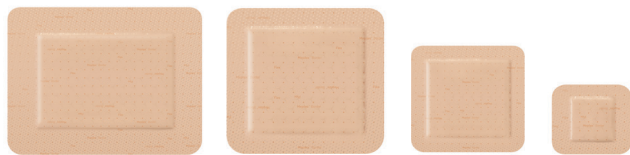
Performed under real world conditions, two individual QIPs (Quality Improvement Projects) conducted in a hospital setting in the US showed substantial reductions in the dressing utilisation compared to their previous formulary dressings*. A change in the hospital protocol due to the extended wear time of Mepilex Border Flex thus resulted in fewer dressing changes, documented cost reductions and less nursing time^{1,2}.

*Allevyn® Gentle Border and Optifoam® Gentle Border SA



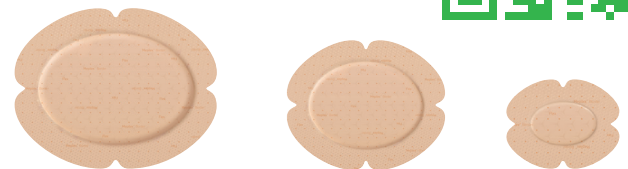
Learn more about Mepilex Border Flex [here](#)

You will be required to input the following code **1FtYrV** or your **AHPRA registration number** to access our websites.



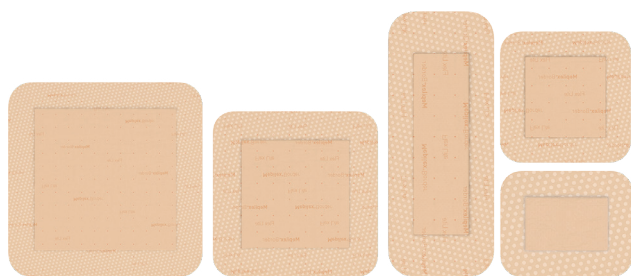
Mepilex Border Flex

Product code	Size (cm)	Pad size (cm)	Pcs/Box
595211	7.5 x 7.5	4.5 x 4.5	10
595311	10 x 10	6.5 x 6.5	10
595011	12.5 x 12.5	8.5 x 8.5	10
595411	15 x 15	11 x 11	10
595611	15 x 20	11x16	10



Mepilex Border Flex Oval

Product code	Size (cm)	Pad size (cm)	Pcs/Box
583500	7.8 x 10	3.5 x 5.5	5
583300	13 x 16	9 x 12	5
583400	15 x 19	11 x 15.2	5



Mepilex Border Flex Lite

Product code	Size (cm)	Pad size (cm)	Pcs/Box
581011	4 x 5	2 x 3	10
581010	5 x 12.5	2.5 x 8.5	5
581200	7.5 x 7.5	4.5 x 4.5	5
581300	10 x 10	6.5 x 6.5	5
581500	15 x 15	11 x 11	5

References: 1. Nelson, D. A New Bordered Foam Dressing Technology Improves Wound Outcomes and Satisfaction While Reducing Dressing Utilization in Acute Care. Poster Presentation at WOCN Annual Meeting, Nashville, 2019. 2. Tyson, L. Study First: Driving the Case for Improving Hospital Wound Care. Poster Presentation at WOCN Annual Meeting, Nashville, 2019. 3. Mölnlycke Health Care. Mepilex® Border Flex – Estimate of spreading area using dot pattern on backing film. Report no. PD-528872. Data on file. 4. Mölnlycke Health Care. Mepilex® Border Flex Product Manual – Conformability PD-528870. Data on file. 5. Mölnlycke Health Care. Mepilex® Border Flex – Bacteria encapsulation. Report no. PD-537072. Data on file. 6. Mölnlycke Health Care. Mepilex® Border Flex Product Manual – Spreading layer PD-528874. Data on file. 7. Mölnlycke Health Care. Product Manual – Maintained dressing profile. Report no. 525458. Data on file. 8. White, R. A multinational survey of the assessment of pain when removing dressings. Wounds UK 2008;4(1):14-22. 9. Opinion Matters 'Professional Health Care Treatment for Wounds' survey conducted June-July 2018 in UK. Data on file. 10. Mölnlycke Health Care. Mepilex® Border Flex – Absorption and dispersion tests on inclined plane, viscous test solution. Report no. PD-528871. Data on file. 11. Mölnlycke Health Care. Product manual Initial Absorption using test solutions with protein content. Report no. PD-535352. Data on file. 12. Mölnlycke Health Care. Mepilex® Border Flex – Fluid handling capacity compared to Urgotul® Foam Absorb Border, Aquacel® Foam, Allevyn® Gentle Border, Allevyn® Life, Optifoam® Gentle, KerriFoam® Gentle Border. Report no. PD-527642. Data on file. 13. Mölnlycke Health Care. Product Manual Mepilex® Border Flex – Viral penetration. Report no. PD-535090. Data on file. 14. Karlsson, C et al. Bacterial trapping of a newly developed all-in-one soft silicone foam dressing. Poster. EWMA, Krakow. 2018. 15. Karlsson, C et al. A quantitative method for determination of bacterial trapping effect in wound dressings. Poster. EWMA, Krakow. 2018. 16. Mölnlycke Health Care. Cutimed. Report no. PD-551237. Data on file. 17. Woo, K., Coutts, P.M., Price, P., Harding, K., Sibbald, R.G. A randomised crossover investigation of pain at dressing change comparing foam dressings Advances in Skin and Wound Care 2009;22(7):304-310. 18. Meaume S. et al. A study to compare a new self-adherent soft silicone dressing with a self-adherent polymer dressing in stage II pressure ulcers. Ostomy Wound Management, 2003. 19. Mölnlycke Health Care. Mepilex® Border Flex – External data – FEM simulations MxB Flex vs Allevyn Life. Report no. PD-529747. Data on file. 20. Mölnlycke Health Care. Mepilex® Border Flex – Waterproofness. Report no. PD-532095. Data on file.

www.molnlycke.com.au | www.molnlycke.co.nz

You will be required to input the following code **1FtYrV** or your **AHPRA registration number** to access our websites.

Mölnlycke, 12 Narabang Way, Level 4, Belrose, NSW, 2085. Phone 1800 005 231. New Zealand Orders & Enquiries 0800 005 231, www.molnlycke.co.nz. The Mölnlycke, Mepilex and Safetac trademarks, names and logos are registered globally to one or more of the Mölnlycke Health Care Group of Companies. ©2021 Mölnlycke Health Care. All rights reserved. AUWC_IM002586_V1.1

Allevyn is a registered trademark of Smith+Nephew. Cutimed and Siltec are registered trademarks of BSN Medical. Optifoam is a registered trademark of Medline Industries, Inc. Sorbact is a registered trademark of ABIGO Medical.